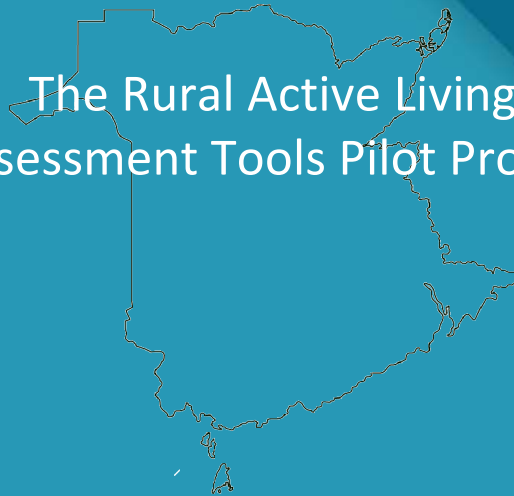




# Adapting RALA Tools for New Brunswick

The Rural Active Living  
Assessment Tools Pilot Project



Holly Owens, MCIP RPP  
NB CLASP Facilitator  
Dillon Consulting

# Outline

NB CLASP Project

- Background
- RALA Tools
- Adaptation
- Pilot Project
- Next Steps
- Discussion



# Background

NB CLASP Project

- Active Living Research – Dr. David Hartley
- Population of <10,000
- Easy to use



<http://activelivingresearch.org/rural-active-living-assessment-rala-tools>

# RALA Tools

NB CLASP Project

- Town-Wide, Programs/Policies, Street Segment
  - General community characteristics
  - Facility presence and location: educational, recreational
  - Community / school programs and policies for youth
  - Walkability, land use, subjective assessment
- Codebook
- Scoring Tool

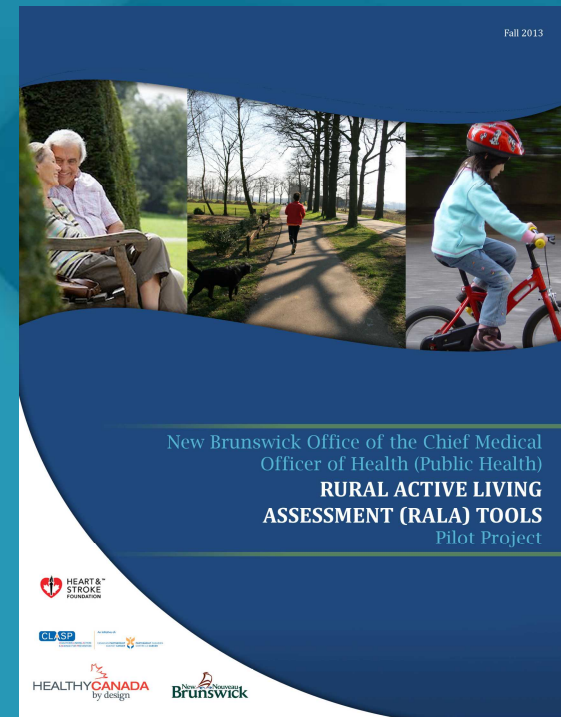


<http://activelivingresearch.org/rural-active-living-assessment-rala-tools>

# Adaptation

NB CLASP Project

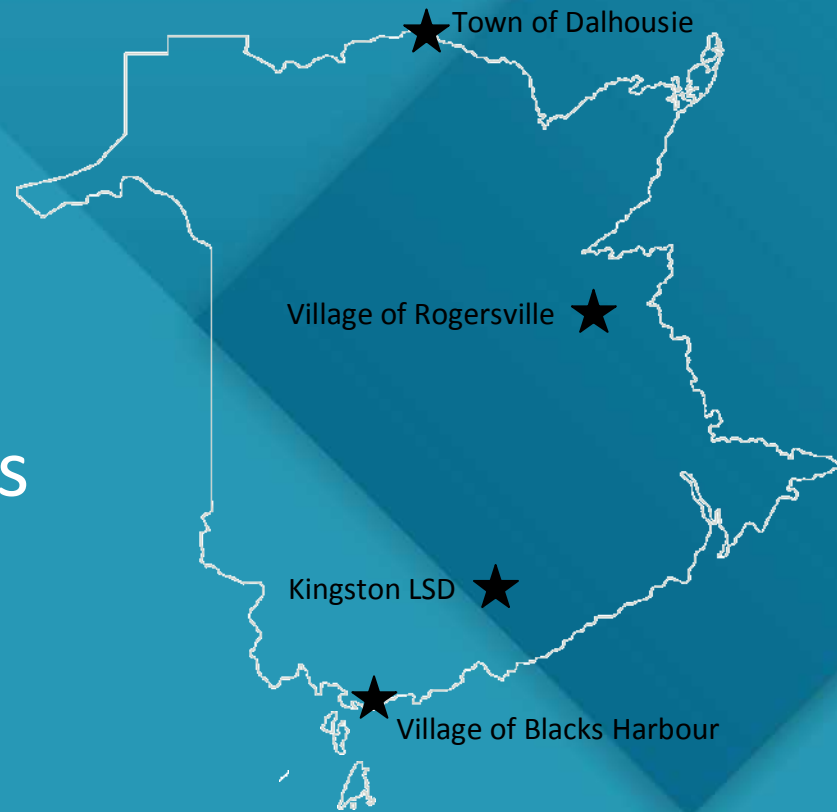
- Cross-Country Collaboration
  - “Canadian-ize”
  - Seniors
  - Examples
- Pilot Project Package
  - Instructions
  - RALA Tools Materials
  - Reporting template
  - Questionnaire
  - Health statistics



# Pilot Project

NB CLASP Project

- Call for EOI
- Partner Selection
- Meetings
- Council Presentations



# Next Steps

NB CLASP Project

- Pilot project completion
- NB Health evaluation of pilot project results
- Evaluation of RALA Tool usefulness
- Possible modifications and province-wide rollout





Questions?  
Comments?

Holly Owens, MCIP RPP  
CLASP Facilitator  
Dillon Consulting, Saint John, NB  
howens@dillon.ca